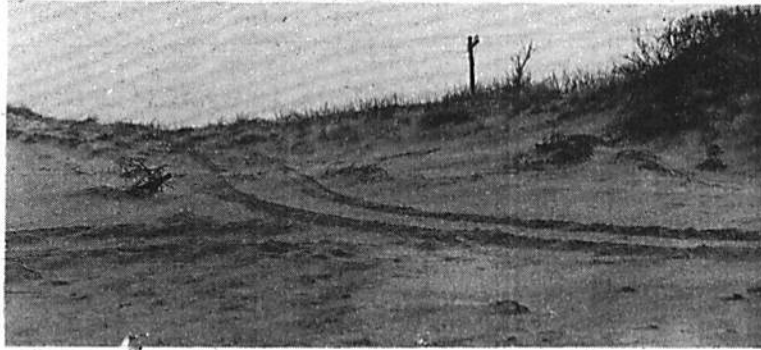


## BEACH CONSERVATION



Pictured above is another example of vehicle vandalism: vehicle operation in dune and vegetated areas. It is interesting to note that this sort of vegetation damage resulting in dune destruction is more frequent in the so-called "off season." It is evident that there is no off season when it comes to beach activities.

Thanks to selectman Paul Barber for his gift of 3 CB radios and related gear. Our next challenge in this area is to install these communications units without funds.

Thanks also to Ed Green, head of the Duxbury school system's industrial arts department, over 100 signboards were cut from plywood, driftwood scraps. This material was collected on conservation patrols throughout the year. Conservation officers have been painting these signs during "slow" beach activity days.

Qualified assistant conservation officer candidates continue to be interviewed. They will be introduced as soon as the board of selectmen submit their approval.

The beach bridge parking lot closing hours policy should be clarified. The following information is posted at the beach entrance and has been policy for many years at Duxbury Beach Park. Thanks to the complete cooperation of the Duxbury Beach Association authorized Duxbury residents may travel through the Beach Park area to the traditional resident parking area.

Weather permitting and beach population and activity as a primary indicator, the Beach Park and Bridge Parking areas have common closing hours. The areas may be open between 9 a.m. and 8 p.m. every day except Saturday when the closing time may be 10 p.m. The roadway gates will be locked at closing.